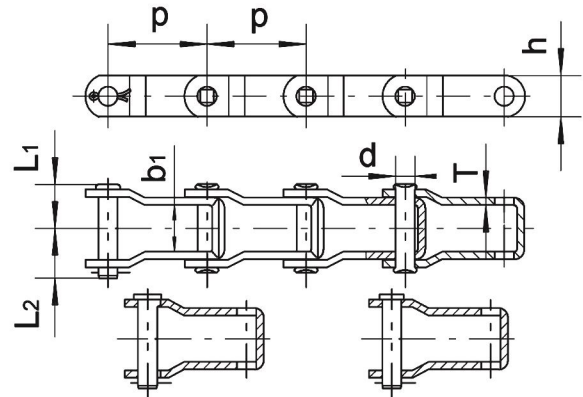


钢制销合链 Steel Pintle Chains



Tear Drop Type CL

Ordinary Type CL

链号 Chain No.	节距 Pitch	每 10FT 节数 Links per 10FT	每英尺 净重 Weight per FT	最小抗拉 强度 Ultimate Tensile strength	平均拉 伸强度 Average tensile strength	最大允许工 作载荷 Maximum recommen ded working load	窄端 内宽 Inside width at narrow end	销轴 Pin			链板 Plate	
	P		q	Q(min)	QkN	kN	b1	d	L1	L2	h	T
	mm		kg/FT (lb./ FT)	kN(Lb.)	(Lb.)	(Lb.)	mm	mm	mm	mm	mm	mm
D205	31.75	96	0.186	18	21.8	2.5	9.53	5.08	10.7	13.5	11.9	2.1
	1.25		0.41	4,050	4,900	560	0.375	0.2	0.421	0.543	0.469	0.083
662	42.27	72	0.506	42.5	49.8	7.6	23.2	7.16	20.75	22.95	18.3	3.20
	1.664		1.12	9,560	11,200	1,710	0.913	0.282	0.817	0.904	0.72	0.126
662H	42.27	72	0.622	48.9	52	7.8	23.2	7.16	21.45	23.85	20.4	3.6
	1.664		1.37	11,000	11,700	1,755	0.913	0.282	0.844	0.939	0.803	0.142
662HD	42.27	72	0.812	60	65.8	9.3	23.2	7.92	22.75	25.45	22.23	4.3
	1.664		1.79	13,500	14,800	2,090	0.913	0.312	0.896	1.002	0.87	0.17
667X	57.15	53	0.887	88.9	96.5	13.4	27	11.1	25	29.3	23.8	4.3
	2.25		1.95	20,000	21,700	3,010	1.063	0.437	0.984	1.154	0.937	0.17
667XH	57.15	53	1.314	124.5	138	21.4	27.8	11.91	29.05	32.25	26.8	5.7
	2.25		2.89	28,000	31,050	4,810	1.094	0.469	1.144	1.27	1.055	0.224
667K	57.15	53	1.159	106.8	132	17.78	27.8	11.1	27.75	30.85	26.8	5.1
	2.25		2.55	24,000	29,700	4,000	1.094	0.437	1.093	1.215	1.055	0.20
667KC	57.15	53	1.16	137.35	148	21.33	27.8	11.1	27.75	30.85	26.8	5.1
	2.25		2.56	30,900	33,290	4,800	1.094	0.437	1.093	1.215	1.055	0.20
667H	58.75	52	0.564	52.1	57.4	8.5	25.6	7.92	21.85	24.25	22.23	3.2
	2.313		1.24	11,720	12,900	1,910	1.008	0.312	0.86	0.955	0.875	0.126
667J	57.15	53	0.854	86.5	95	13.1	27	9.52	25	29.3	23.8	4.3
	2.313		1.88	19,460	21,370	2,950	1.063	0.375	0.984	1.154	0.937	0.17
88K	66.27	46	1.098	106.8	132	17.8	27.8	11.1	27.75	30.85	26.8	5.1
	2.609		2.41	24,000	29,700	4,000	1.094	0.437	1.093	1.215	1.055	0.20
88C	66.27	46	1.601	152	169	26.7	31.75	12.7	32.65	35.65	28.58	6.4
	2.609		3.53	34,200	38,020	6,000	1.25	0.5	1.285	1.404	1.125	0.25
308C	78.1	39	2.54	200	222	35.6	32.5	15.88	38.25	41.75	38.1	8
	3.075		5.59	45,000	50,000	8,000	1.28	0.625	1.506	1.644	1.5	0.315